

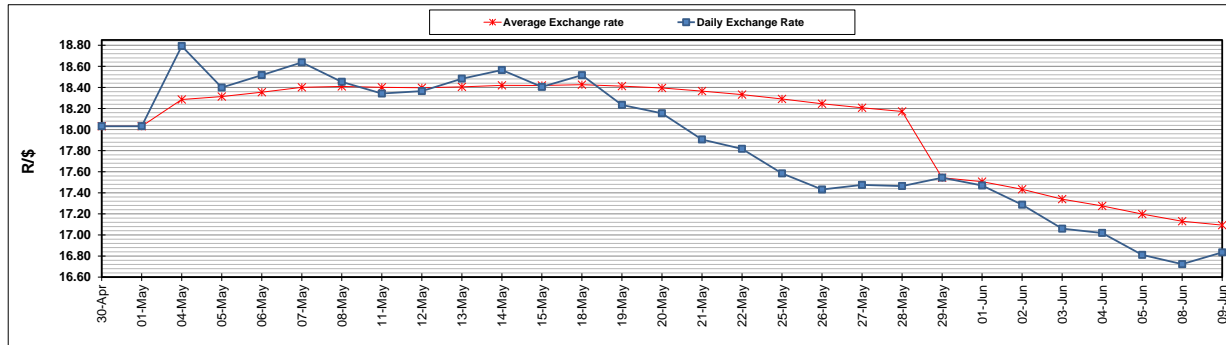
	PETROL 95 ULP	PETROL 93 ULP & LRP	DIESEL 0.05%	DIESEL 0.005%	ILL. PAR.
GAUTENG PUMP PRICE (SA c/l) AS FROM 03/06/2020	1,340.000	1,320.000	-	-	-
WHOLESALE PRICE (SA c/l) AS FROM 03/06/2020	-	-	1,130.560	1,138.960	489.828
SINGLE NATIONAL MAXIMUM RETAIL PRICE	-	-	-	-	597.000
BASIC FUEL PRICE - 09/06/2020 (SA c/l)	542.290	523.672	541.862	546.224	485.394
PRESS RELEASE CONTRIBUTION TO BFP 03/06/2020 - 09/06/2020 (SA c/l)	392.770	382.770	379.630	388.030	285.128
UNIT OVER/(UNDER) RECOVERY - 09/06/2020 (SA c/l)	(149.520)	(140.902)	(162.232)	(158.194)	(200.266)
AVERAGE BASIC FUEL PRICE 29/05/2020 - 09/06/2020	515.533	494.798	515.473	520.035	462.026
AVERAGE UNIT OVER/(UNDER) RECOVERY 29/05/2020 - 09/06/2020	(167.013)	(156.278)	(144.093)	(139.880)	(191.898)

ANALYSIS MOVEMENT OF AVERAGE OVER/(UNDER) RECOVERY

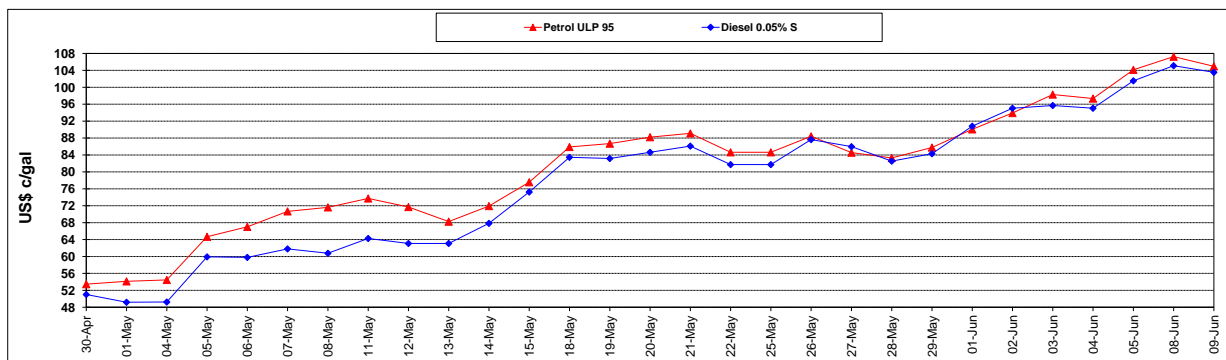
	PETROL 95	PETROL 93	DIESEL 0.05%	DIESEL 0.005%	ILL. PAR.
- MOVEMENT IN INTERNATIONAL PRODUCT PRICES	(199.528)	(187.485)	(176.604)	(172.679)	(221.039)
- MOVEMENT IN EXCHANGE RATE	32.515	31.207	32.511	32.799	29.141
AVERAGE UNIT OVER/(UNDER) RECOVERY 29/05/2020 - 09/06/2020	(167.013)	(156.278)	(144.093)	(139.880)	(191.898)

R/\$ EXCHANGE RATE - (R/\$16.8347 - 09/06/2020)

EXCHANGE RATE USED IN BASIC FUEL PRICE



INTERNATIONAL PRODUCT PRICES OF BASKET USED IN BASIC FUEL PRICE



BASIC FUEL PRICE IN SA CENTS PER LITRE

